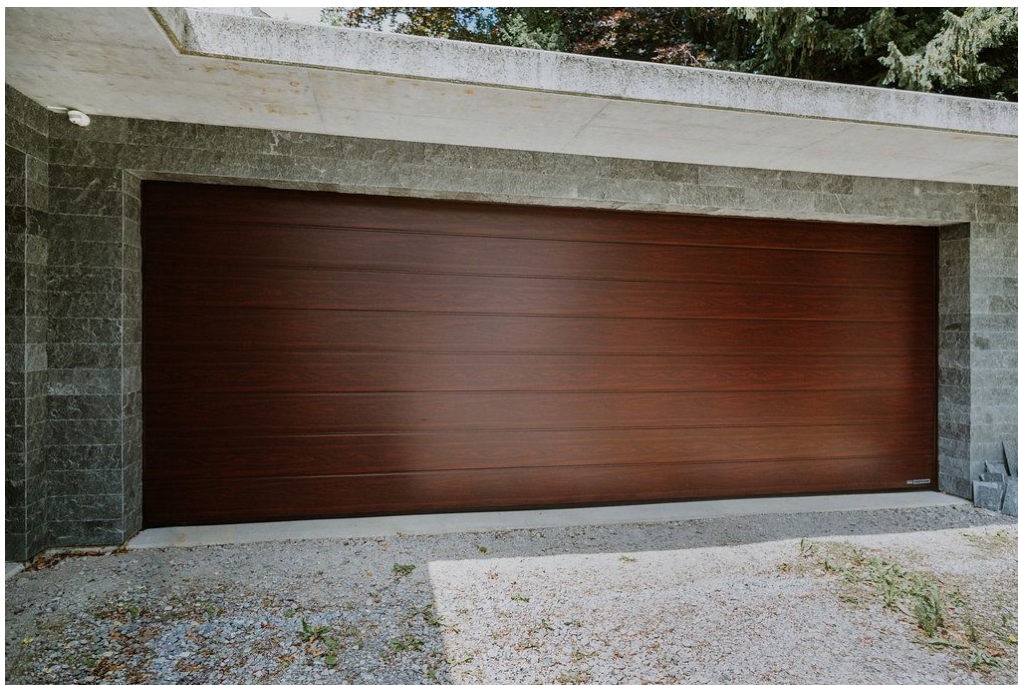


Referenzobjekt

EFH Spiez in 3700 Spiez



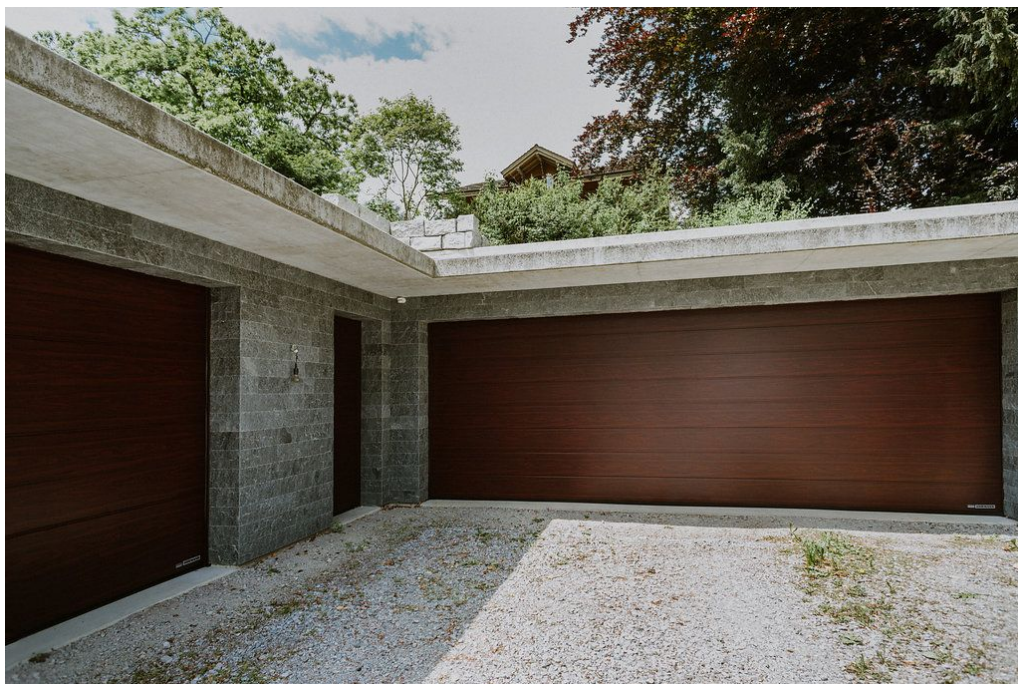
Garagen-Sektionaltor LPU42

Decograin Rosewood

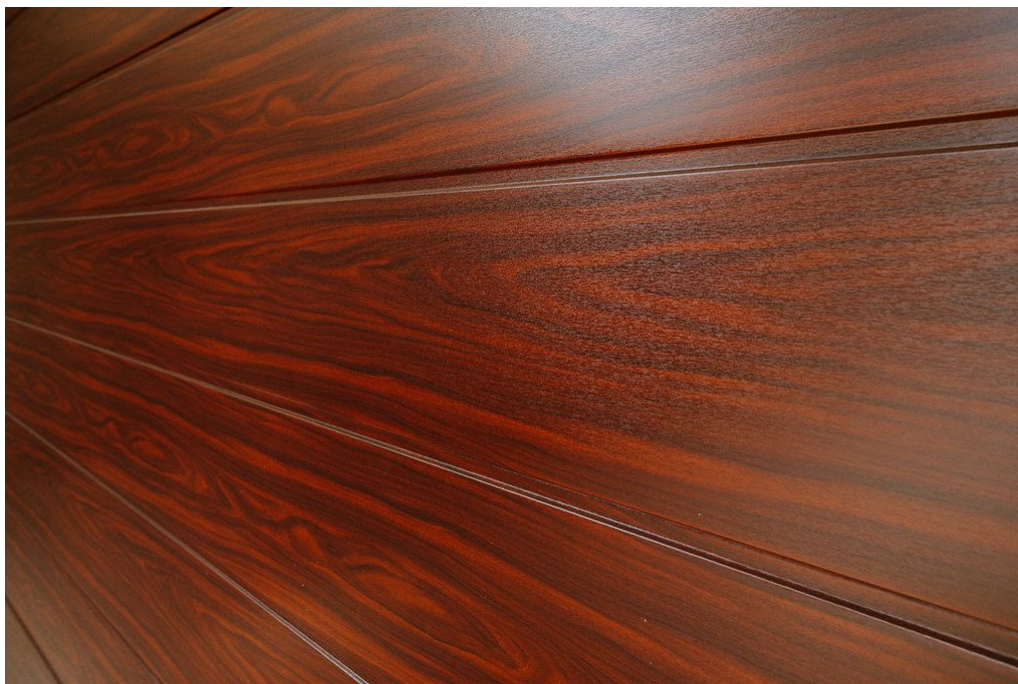
▶ Objektbezeichnung	EFH Spiez
▶ Referenzobjektnummer	CH0000883
▶ Baujahr	2017
▶ Standort / Land	3700 Spiez, Schweiz
▶ Produkt	LPU42
▶ Verbaute Hörmann-Produktbereiche	Garagen-Sectionaltor
▶ Geplant und installiert durch	Spiess Stutz 2 3700 Spiez



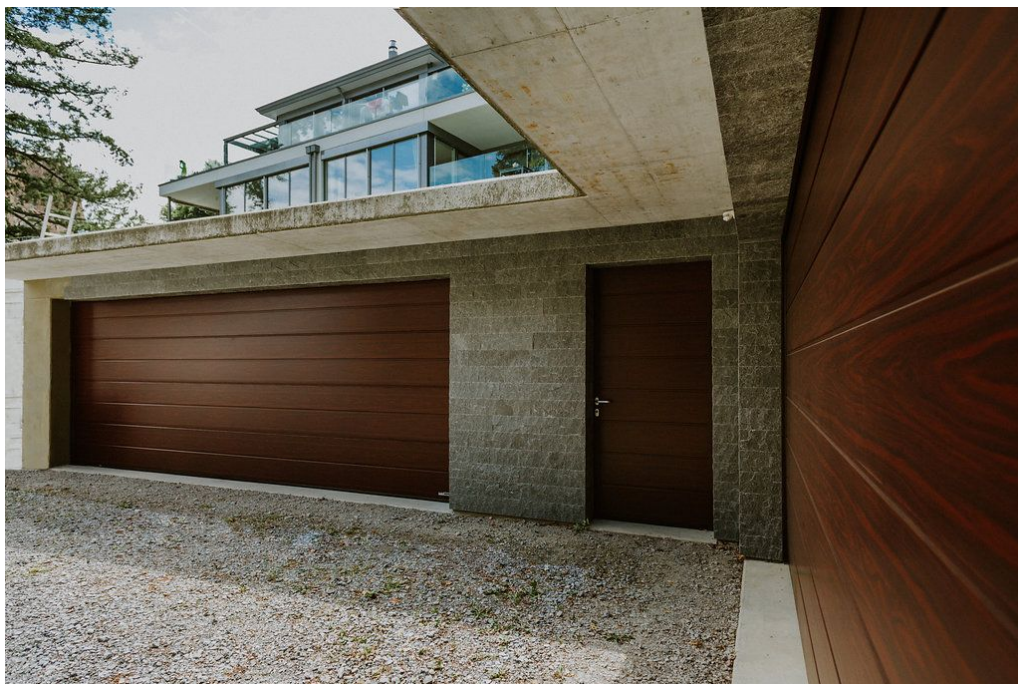
Garagen-Sektionaltor LPU42
Decograin Rosewood



Garagen-Sektionaltore LPU42, Nebentüre NT60
Decograin Rosewood



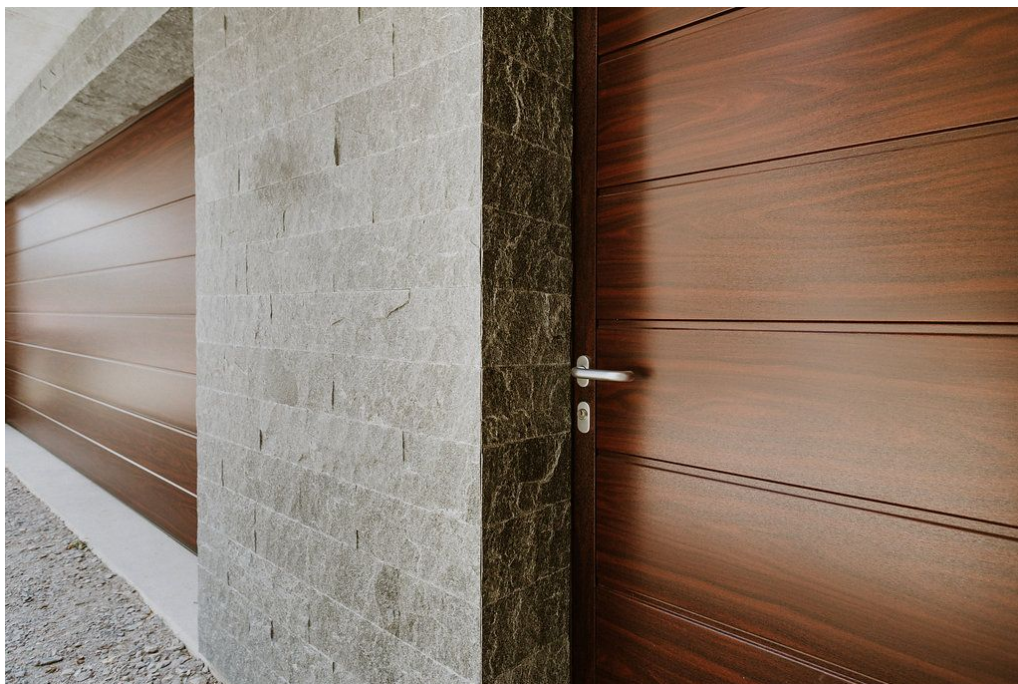
Garagen-Sektionaltor LPU42
Decograin Rosewood



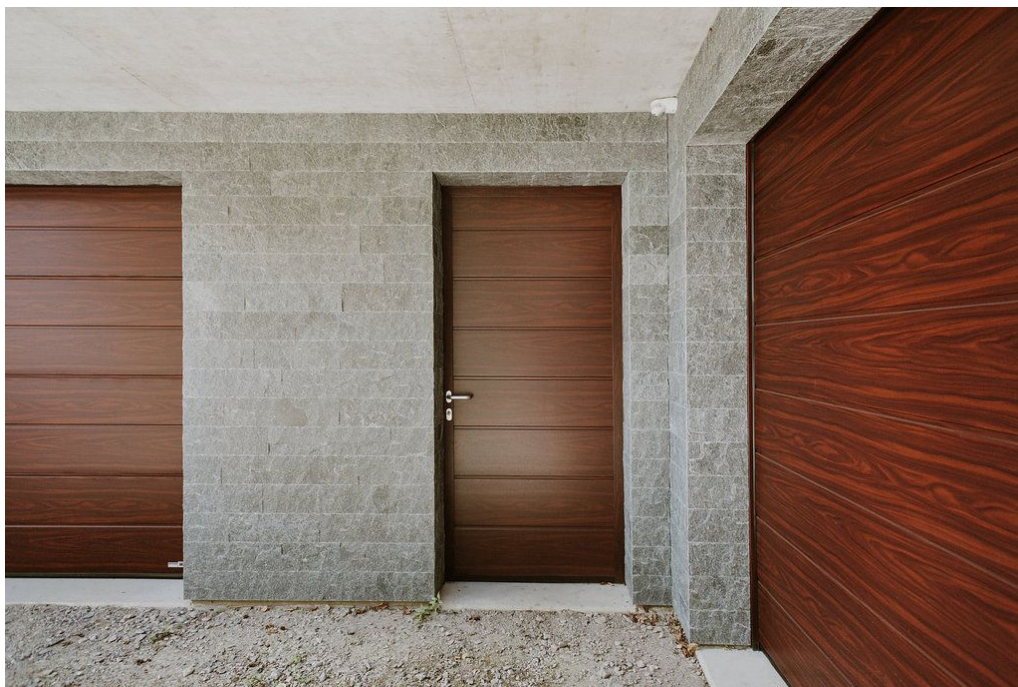
Garagen-Sektionaltor LPU42, Nebentüre NT60
Decograin Rosewood



Garagen-Sektionaltor LPU42, Nebentüre NT60
Decograin Rosewood



Garagen-Sektionaltor LPU42, Nebentüre NT60
Decograin Rosewood



Garagen-Sektionaltor LPU42, Nebentüre NT60
Decograin Rosewood